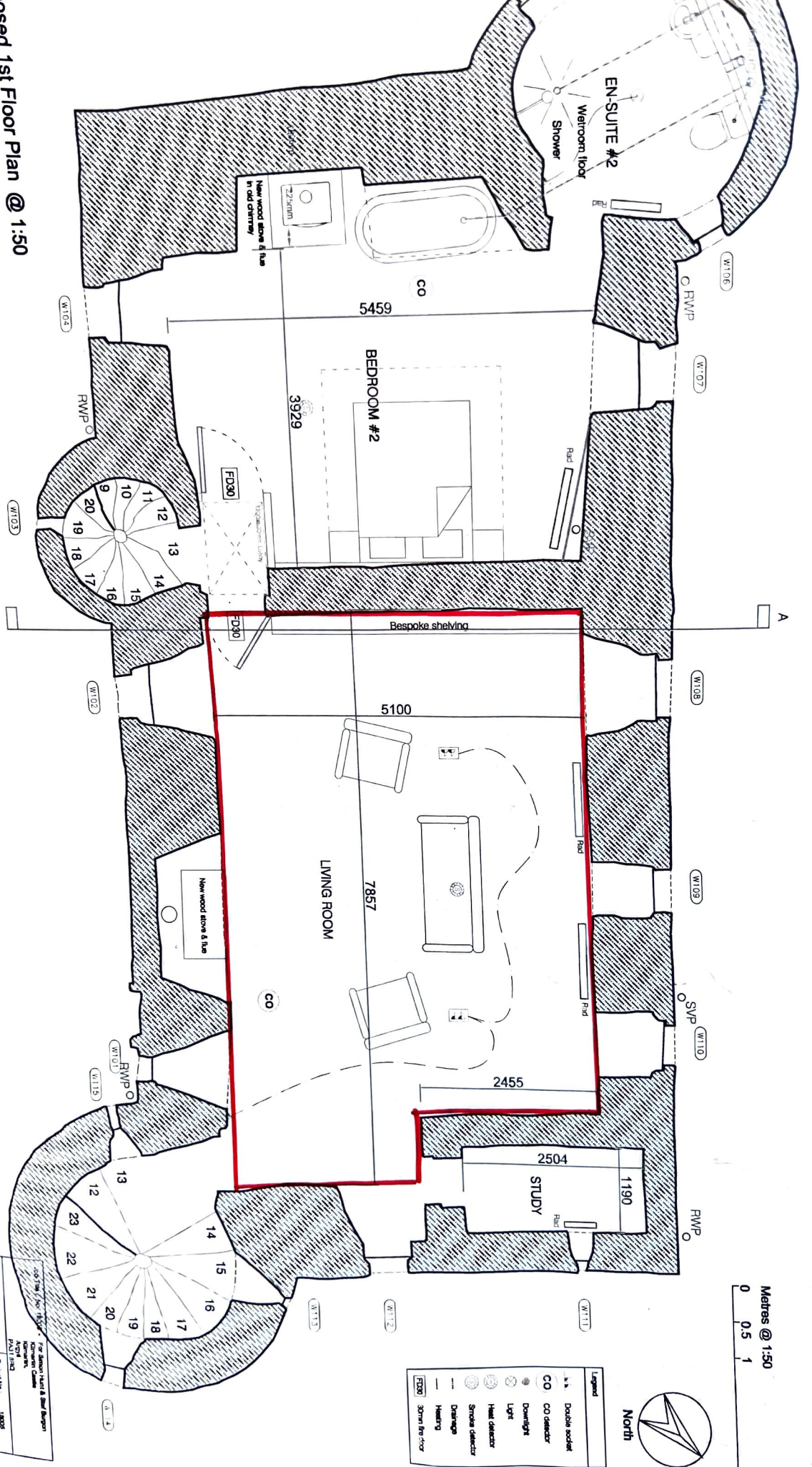


Metres @ 1:50
0 0.5 1 2.5



Legend	
1.5	Double socket
CO	CO detector
☀	Downlight
☀	Light
☀	Heat detector
☀	Smoke detector
☀	Drainage
☀	Heating
300mm fire door	



Proposed 1st Floor Plan @ 1:50

Notes:

1. All work to be carried out in strict accordance with the Building Regulations (Scotland) 2008, electrical works to be carried out in accordance latest edition of IET regulations BS 7671: 2008, Amendment 3: 2015 and to the satisfaction of the local authority.
2. All plumbing works to be laid, installed and tested to the satisfaction local authority, and in accordance with BS EN 12056-1: 2000, BS EN 752-3: 1997 (AMD 2), BS EN 1610: 1998.
3. All drainage works to be laid, installed and tested to the satisfaction local authority, and in accordance with BS EN 12056-2: 2000.
4. All high aluminium cement or asbestos material to be used.
5. All high aluminium cement or asbestos material to be used.
6. All high aluminium cement or asbestos material to be used.
7. All high aluminium cement or asbestos material to be used.
8. All high aluminium cement or asbestos material to be used.
9. All high aluminium cement or asbestos material to be used.
10. All high aluminium cement or asbestos material to be used.
11. All high aluminium cement or asbestos material to be used.
12. All high aluminium cement or asbestos material to be used.
13. All high aluminium cement or asbestos material to be used.
14. All high aluminium cement or asbestos material to be used.
15. All high aluminium cement or asbestos material to be used.
16. All high aluminium cement or asbestos material to be used.
17. All high aluminium cement or asbestos material to be used.
18. All high aluminium cement or asbestos material to be used.
19. All high aluminium cement or asbestos material to be used.
20. All high aluminium cement or asbestos material to be used.
21. All high aluminium cement or asbestos material to be used.
22. All high aluminium cement or asbestos material to be used.
23. All high aluminium cement or asbestos material to be used.

1. All Architecture have no responsibility for any use made of this document other than that for which it was prepared.

2. All Dimensions to be checked on site.

3. Do not scale from this drawing.

4. Any Drawing errors or divergences should be brought to the attention of the originator of the drawing. If in doubt, ask.

Drawn by	LH	Project No.	10005
Checked by	LH	Scale	1:50 @ A3
Approved by	LH	Date	28.08.18
Drawing No.	10005-1	Revision	E
Proposed 1st floor plan			

LH ARCHITECTURE AND DESIGN
RESPONSIVE ARCHITECTURE AND DESIGN
9 Bellisle Crea, Bridge of Weir, PA11 3JA
0141 2507898 mail@lharchitecture.co.uk